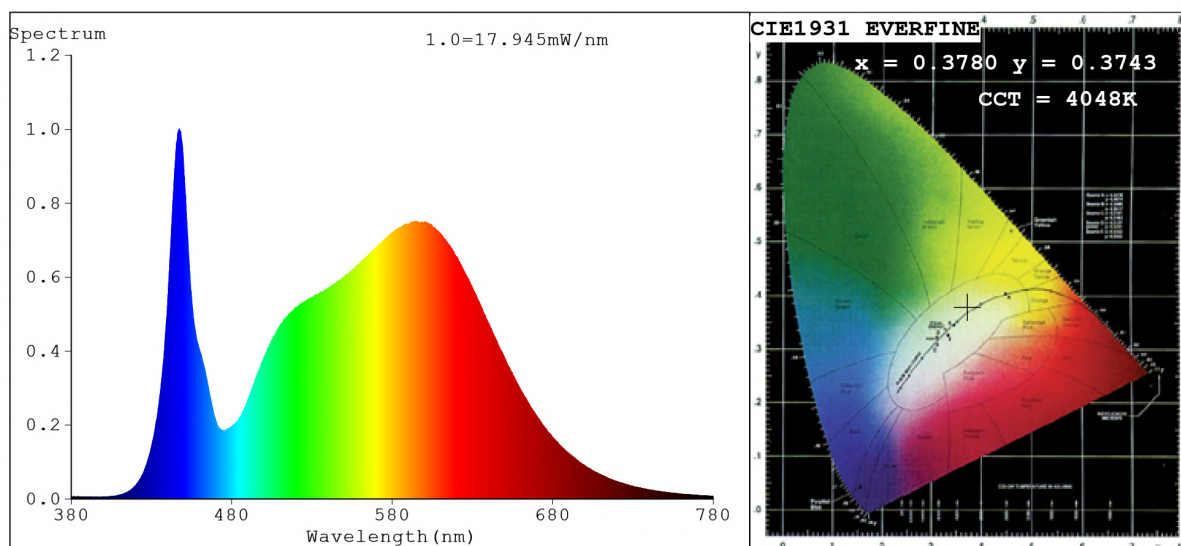


Spectrum Test Report



Color Parameters:

Chromaticity Coordinate: $x=0.3780$ $y=0.3743$ $u'=0.2245$ $v'=0.5001$
 CCT=4048K (Duv=-0.0004) Dominant WL: $\lambda_d = 579.1\text{nm}$ Purity=25.8%
 Ratio: R=18.3% G=78.2% B=3.5%; Peak WL: $\lambda_p = 447.4\text{nm}$ FWHM=16.2nm
 Render Index: Ra=83.4 CRI=77.1 TM30: Rf=82 Rg=97
 R1 =82 R2 =88 R3 =94 R4 =84 R5 =83 R6 =84 R7 =86
 R8 =66 R9 =10 R10=73 R11=84 R12=65 R13=83 R14=96 R15=76

Photo Parameters:

Flux = 779.9 lm Eff. : 149.83 lm/W Fe = 2.370 W Scotopic:1320 S/P:1.6926

Electrical parameters:

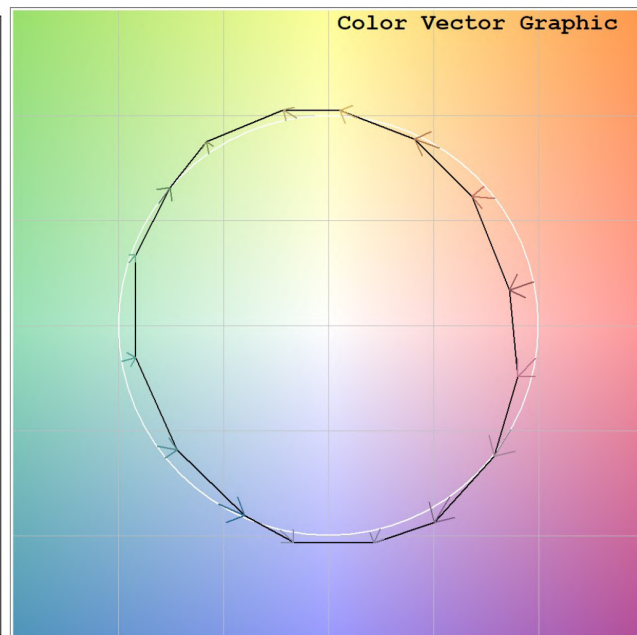
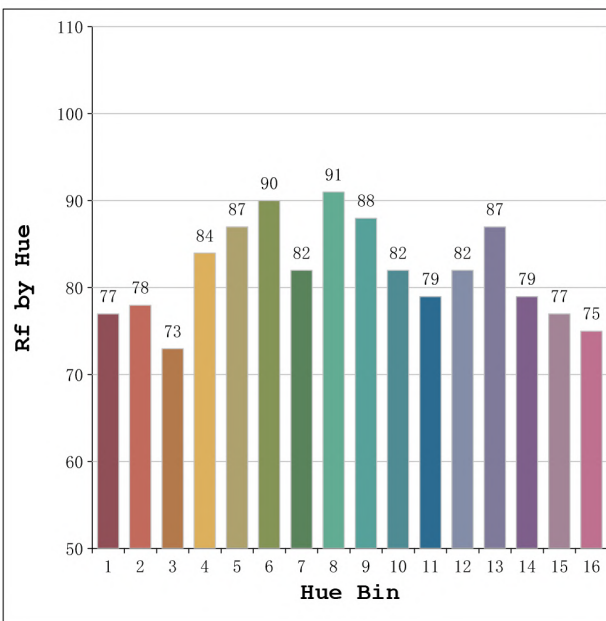
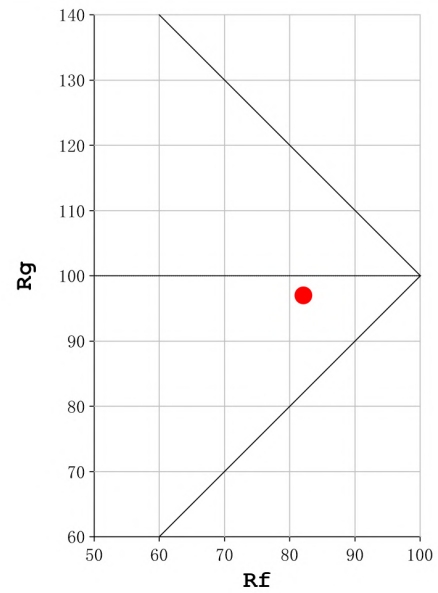
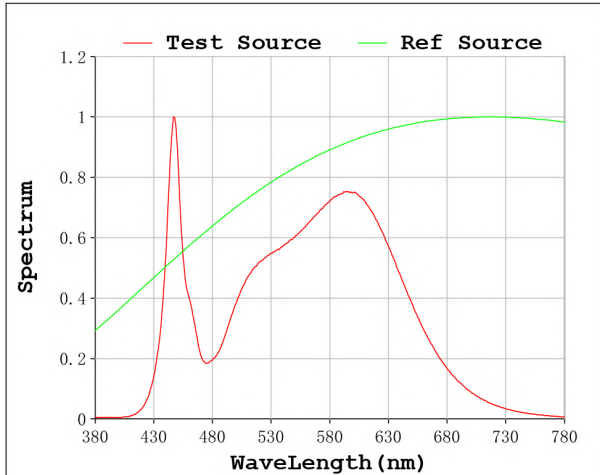
V = 23.998 V I = 0.2169 A P = 5.205 W PF = 1.000

Status: Integral T = 1894 ms Ip = 52832 (81%)

Model:Ecoled Élite 5 4000k
 Tester:Sergio Carneros
 Temperature:20Deg
 Manufacturer:Luz Negra

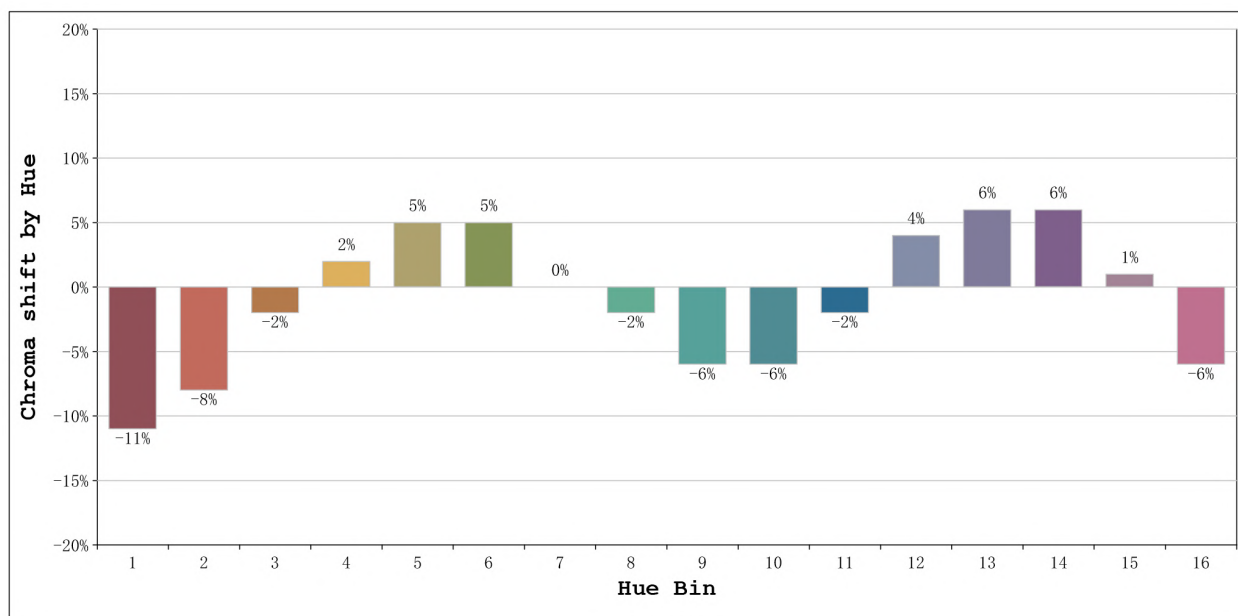
Number: 31.006
 Date:2023-05-29 14:40:08
 Humidity:50%
 Remarks:100cm de tira flexible

Rf: 82 **CCT: 4048 K** **u': 0.2245**
Rg: 97 **Duv: -0.0004** **v': 0.5001**



Model:Ecoled Élite 5 4000k
 Tester:Sergio Carneros
 Temperature:20Deg
 Manufacturer:Luz Negra

Number: 31.006
 Date:2023-05-29 14:40:08
 Humidity:50%
 Remarks:100cm de tira flexible



			Graphic shift(%)	
Hue Bin	Hue Angle	Rf	Chroma	Hue
1	0.0° - 22.5°	77	-11	-1
2	22.5° - 45.0°	78	-8	7
3	45.0° - 67.5°	73	-2	12
4	67.5° - 90.0°	84	2	9
5	90.0° - 112.5°	87	5	5
6	112.5° - 135.0°	90	5	-1
7	135.0° - 157.5°	82	0	-8
8	157.5° - 180.0°	91	-2	-3
9	180.0° - 202.5°	88	-6	0
10	202.5° - 225.0°	82	-6	7
11	225.0° - 247.5°	79	-2	13
12	247.5° - 270.0°	82	4	7
13	270.0° - 292.5°	87	6	-3
14	292.5° - 315.0°	79	6	-12
15	315.0° - 337.5°	77	1	-14
16	337.5° - 360.0°	75	-6	-9

Model:Ecoled Élite 5 4000k
 Tester:Sergio Carneros
 Temperature:20Deg
 Manufacturer:Luz Negra

Number: 31.006
 Date:2023-05-29 14:40:08
 Humidity:50%
 Remarks:100cm de tira flexible